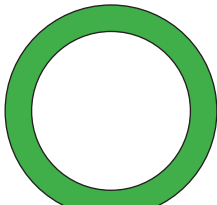


Art.Nr. 12060601

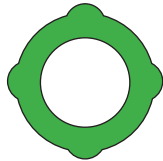
Dichtungssatz | Gasket set | Jeu de joints | Set di guarnizione

REX 15

Flachdichtung
Gasket
Joint
Guarnizione



12 28 x 21 x 1.5



33 18.5 x 12 x 2 (2x)



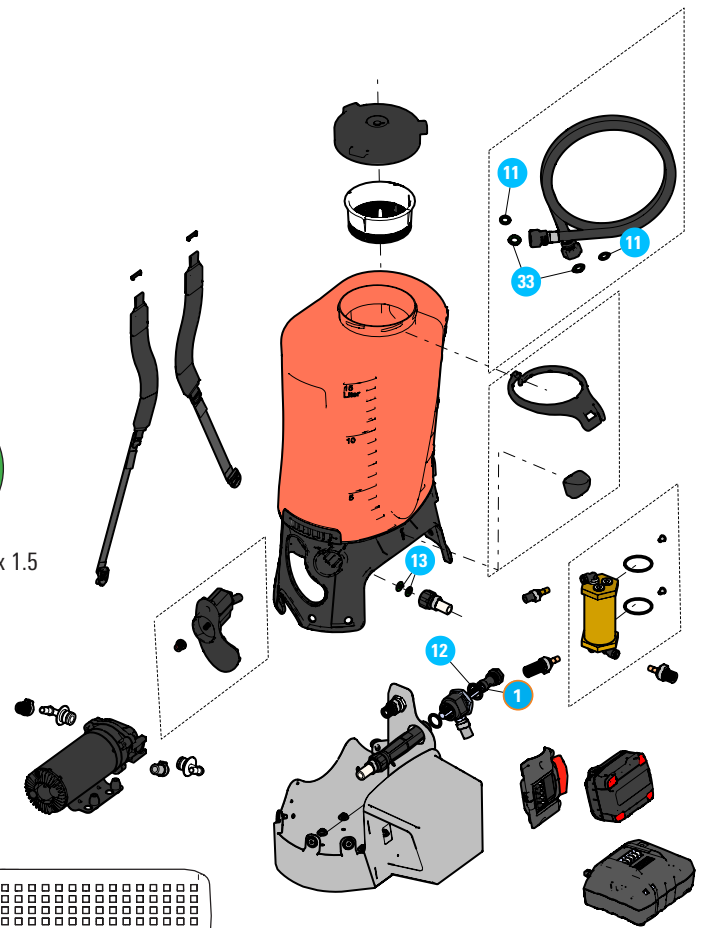
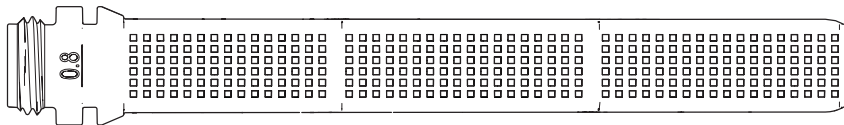
11 17 x 11 x 1.5 (2x)



13 15 x 7.5 x 2 (2x)

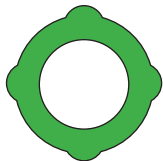
Filter
Filter
Filtre
Filtro

1



A 50, C 50

Flachdichtung
Gasket
Joint
Guarnizione



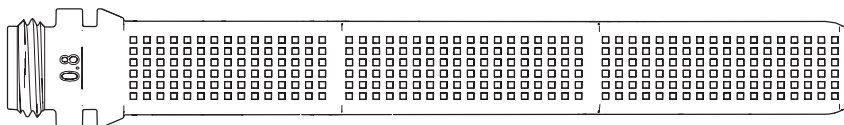
33 18.5 x 12 x 2 (2x)



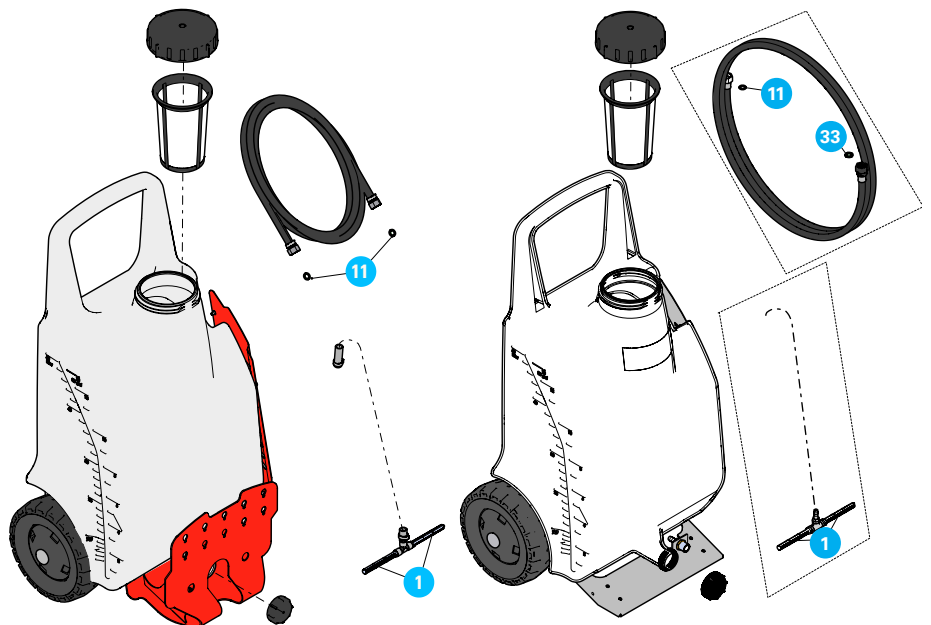
11 17 x 11 x 1.5 (2x)

Filter
Filter
Filtre
Filtro

1

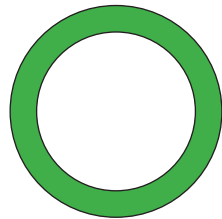


(2x)

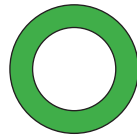


BM 1035

Flachdichtung
Gasket
Joint
Guarnizione



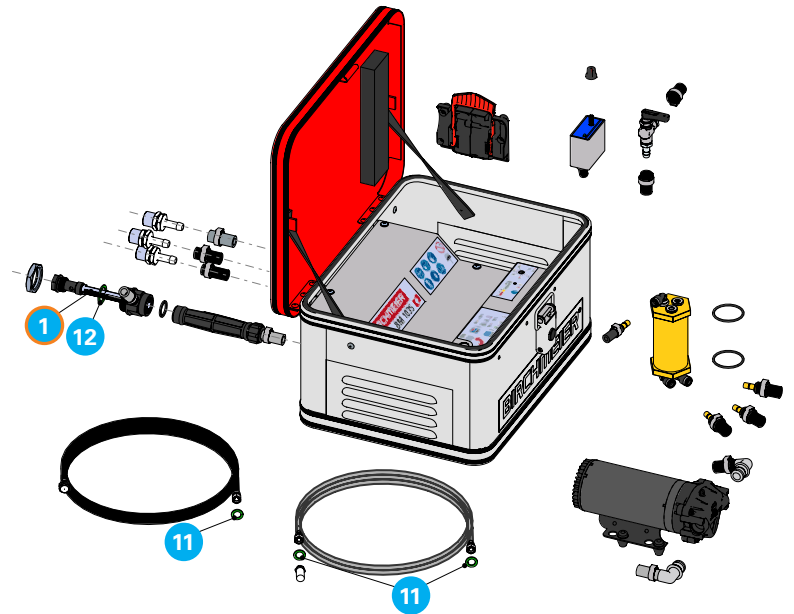
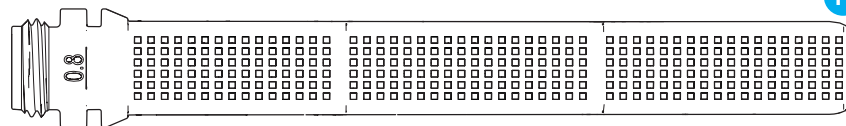
12 28 x 21 x 1.5



11 17 x 11 x 1.5
(3x)

Filter
Filter
Filtre
Filtro

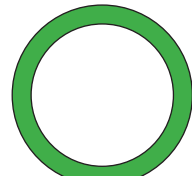
1



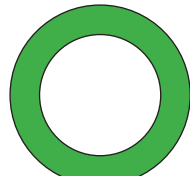
Sprühleitung | Spraying equipment | Conduite de pulvérisation | Lancia per irrorazione

REX 15, A 50, C 50

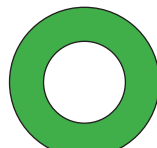
Flachdichtung
Gasket
Joint
Guarnizione



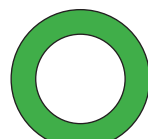
32 24 x 19 x 2



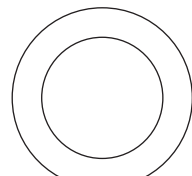
22 24 x 16.2 x 2



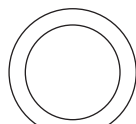
31 20 x 11 x 1.5



30 18.5 x 12 x 2



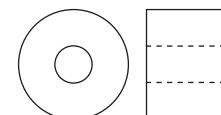
21 24 x 16.2 x 2



27 17 x 12.7 x 2
(4x)



24 12.2 x 7 x 3

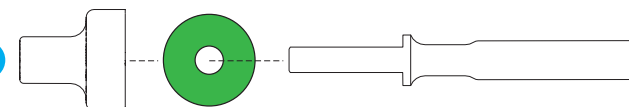


25 14.7 x 5.1 x 10.5

Stopfbüchspackungsring
Gland packing
Gorniture presse-étoupe
Guarnizione pressacavo

Ventilstange kpl.
Valve rod assy.
Tige de soupape compl.
Barretta per valvola completa

23



Filter
Filter
Filtre
Filtro

20

